



INNOVATIVE MICROSCOPES

Providing High Quality & Economical Microscope Solutions



DIGITAL MICROSCOPE
Models: 15x, 30x and 60x

TOUCHSCREEN



OPERATION MANUAL

SKU #DM-S7

1. Introduction

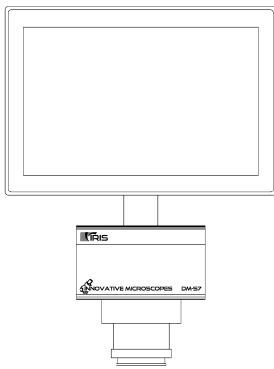
Thank you for purchasing the Digital Microscope. Your microscope is a precision optical instrument, made of the highest quality materials to ensure durability and long life.

Before attempting to use your microscope, please read through the instructions and reference the diagrams below.

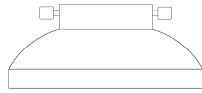
The DM-S7 Digital microscope provides viewing from 3x to 60x (depending on models) using the built-in software and touchscreen display. This is ideal for all electronic printed circuits board inspections, CNC industrial applications, medical and aerospace. Ideal for FAI (first article inspections). Every aspect of use has been taken into account during the design process providing an effortless user experience across all industries for additional user comfort.

The Digital Microscope does not use an eyepiece like a traditional microscope. Instead, the camera sensor display the 15x magnification on the 720p resolution touchscreen display. This makes viewing and inspection with ease, cuts down on neck and eye strain and allows for inspection with others. The new Digital Microscope DM-S7 enables users to improve quality and increase output efficiency. Recording still images is simple. Saving, transferring and sharing image files is quick and easy with the included 8 GB USB thumb drive. Additionally, you can view on most TV screens with an Video splitter (not Included.)

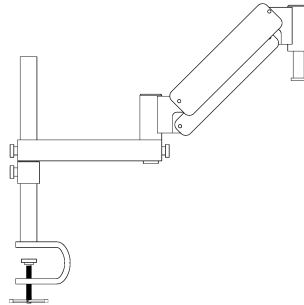
IN THE BOX



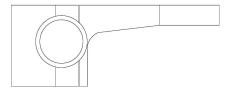
DM-S7 Microscope (1)



Dome Ring Light (1)



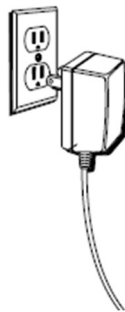
Articulating Arm (1)



Focus Mount (1)

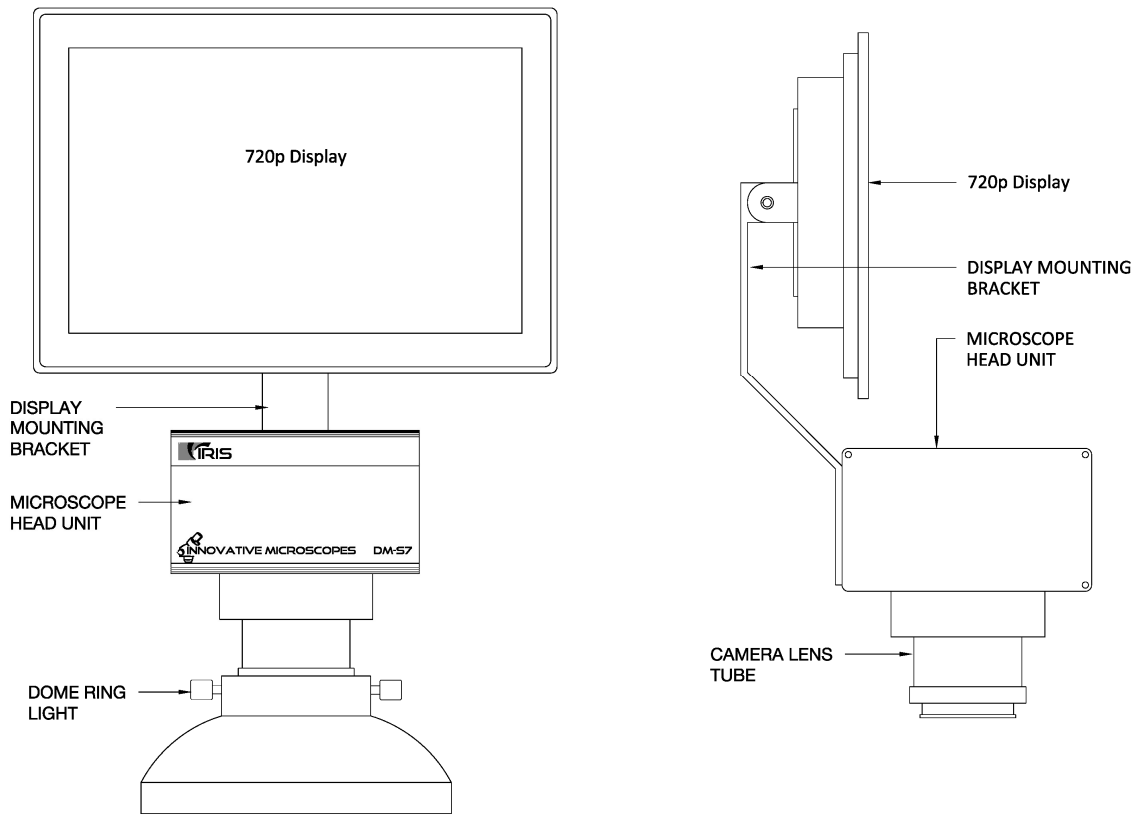


8 GB USB thumb drive

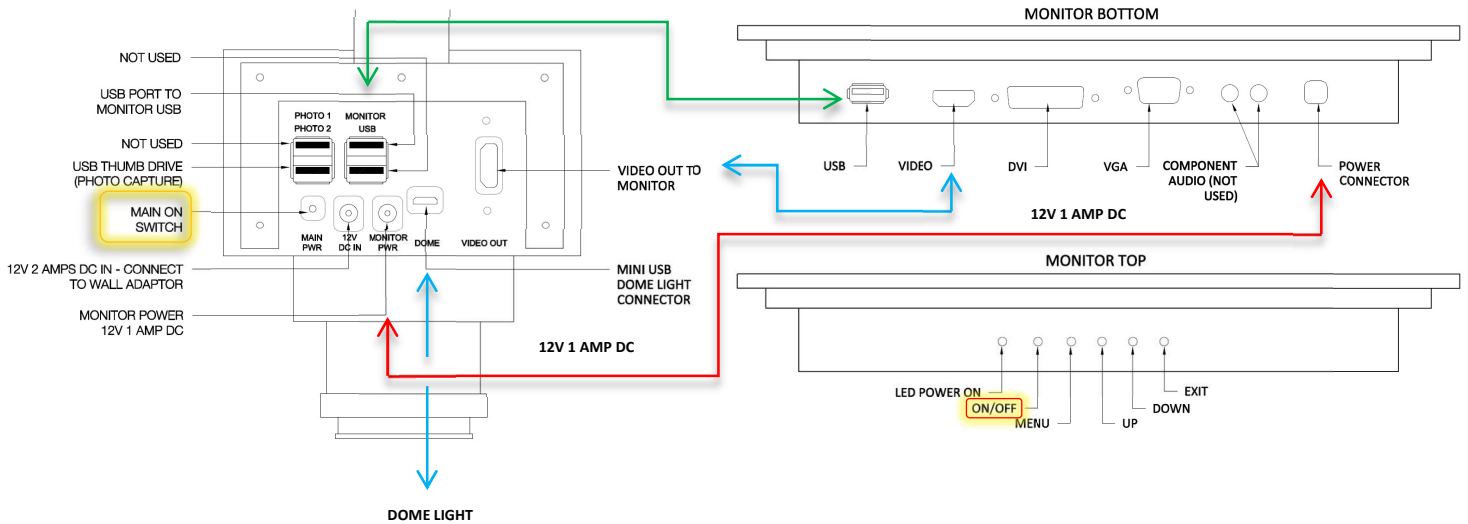


AC adapter (1)

2. PARTS



Wiring Diagram (Pre-installed)



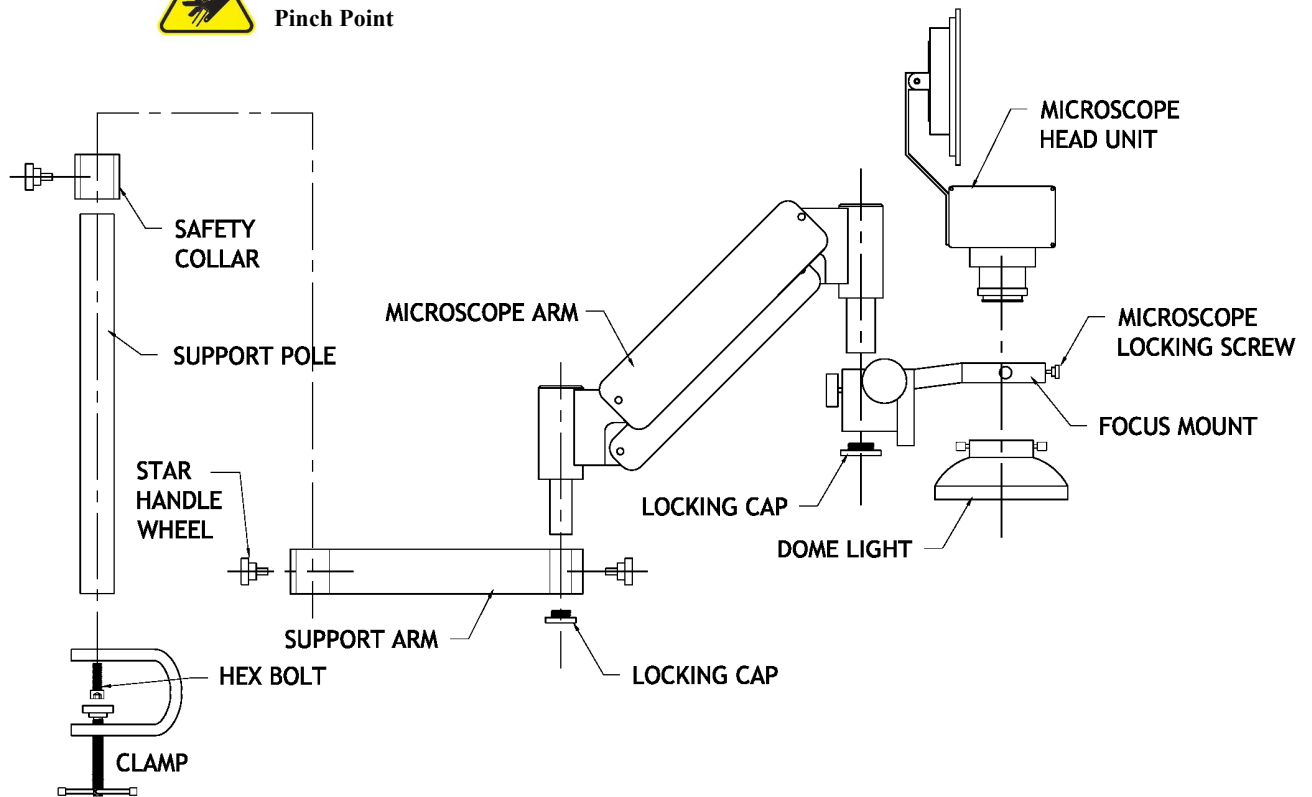
SPECIFICATIONS

Category	Specifications
SKU	DM-S7
LCD Monitor	10.1" capacitive touchscreen, 1280 x 800 pixels, 16:10 ratio 16.7 million colors, Brightness (cd/m2) 300+, Response time 5 ms Contrast ratio 800:1, Viewing angle 85°/85°/85°/85° (R/L/U/D)
Zoom Presets 15x	3x, 7x, 10x, 15x
Zoom Presets 30x	5x, 10x, 15x, 20x, 25x, 30x
Zoom Presets 60x	10x, 20x, 30x, 40x, 50x, 60x
Illuminator	Selectable 4 segments 6500K LED ring light with adjustable brightness
Image Capture Resolution	1280 x 800
Working Distance 15x	5"
Working Distance 30x	6.5"
Working Distance 60x	5.5"
AC adapter	US Plug 110V
Dimensions	406 x 254 x 203 mm (16" x 10" x 8")
Weight	6 lbs. or 2,722 grams
SAFETY	
	The socket-outlet shall be installed near the equipment and shall be easily
	Do not look directly into LED Dome Light while lights are on.
	Disconnect the LED Dome Light when servicing the microscope.
	Disconnect main power wall adapter when servicing the microscope.

3. SETUP



CAUTION
Pinch Point

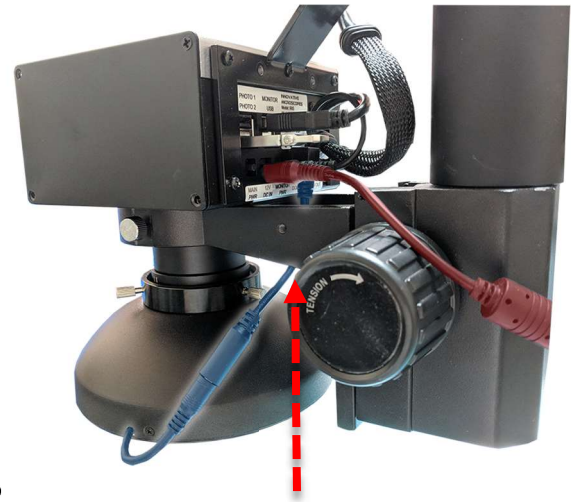


Power on

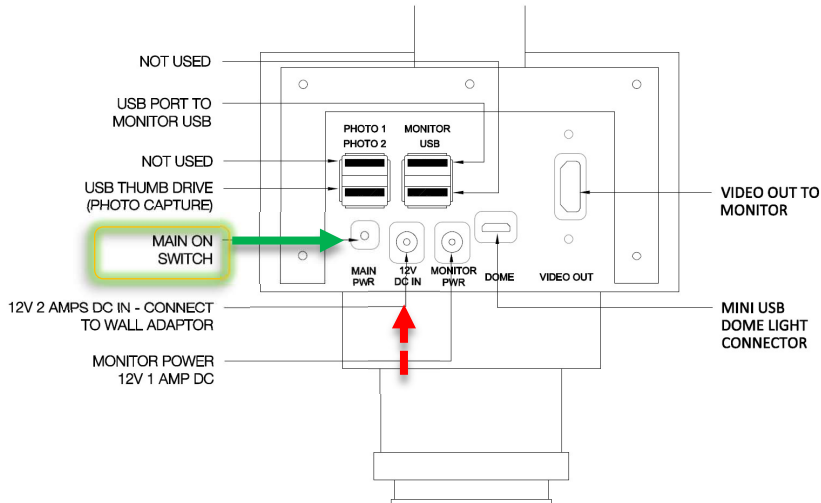
Connect AC adapter to wall outlet (see dashed arrow).

Press the POWER button on the back of the Microscope head unit.
Allow 30-60 secs for operating system to boot up.

Your microscope is ready to use after splash screen Closes.



Connect the dome ring light pigtail through the focus mount as shown



Power off

To POWER down use the on screen menu.

*Note: Recommend shutting off microscope at the end of each day.

Display Settings

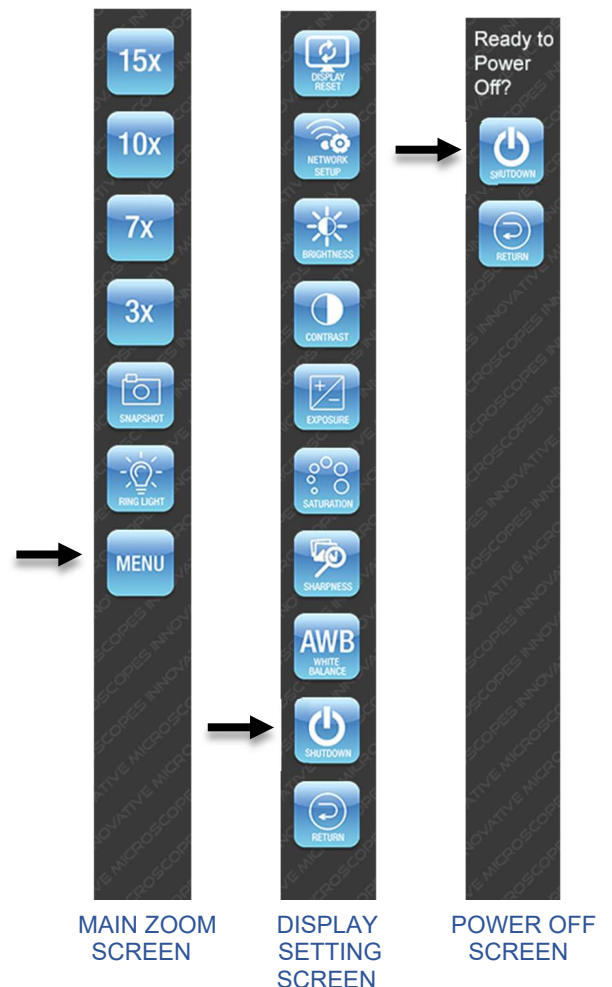
Brightness, contrast, exposure, saturation and **sharpness** should be adjusted to desire settings based on object being viewed.



Display Reset – Resets all display settings to factory default

*Notes:

1. Only main zoom menu screen will auto close after 10 secs.
All other menu screens must use RETURN icon to return to the in the main zoom menu.



4. ZOOM SELECTION

1. Zoom presets 15x, 30x, and 60x
2. Select the desired zoom magnification
3. Active selection is marked by Green text.



5. LIGHT CONTROLS

The Dome light has an adjustable brightness and selectable 4 segment LED control. Each segment has adjustable brightness.

1. Select the Ring light Icon
2. The ring light menu shows five lighting options.
3. All segment on, rear right side, front right, front left and rear left side.
4. Each lighting options will toggle and active selection will be display with a green indicator in the center of the icon.

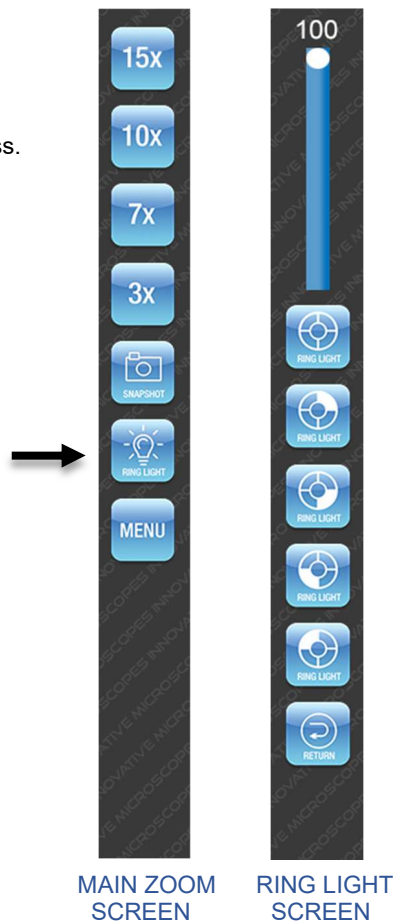


5. Adjust brightness by sliding the intensity bar.



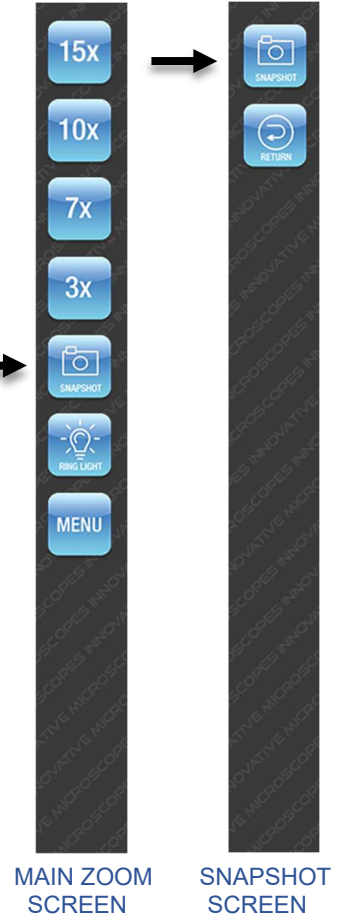
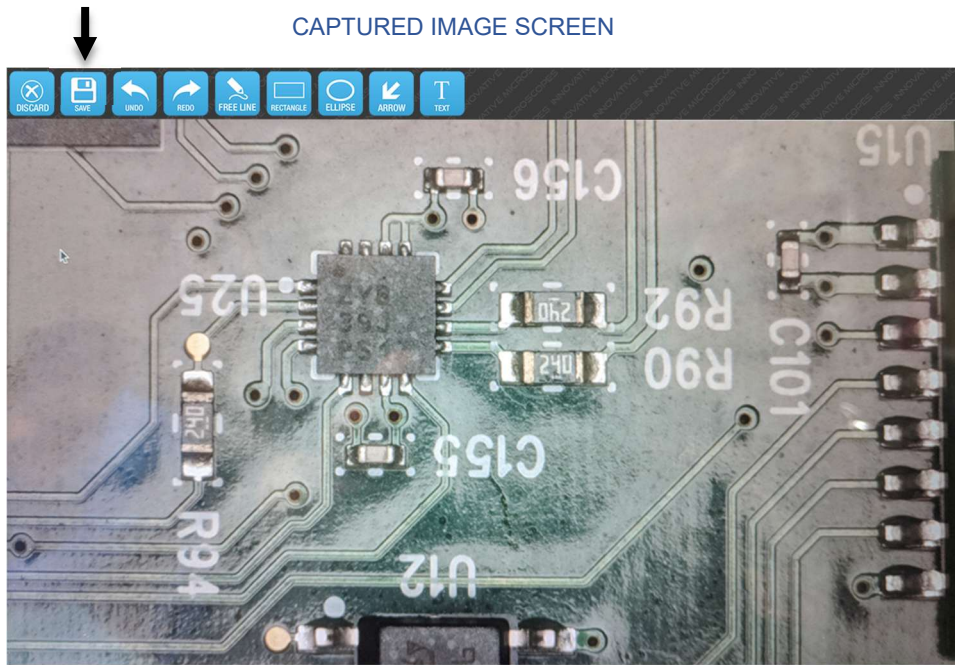
***Note:**

1. No Ring Light Icon – The icon will be visible when the dome ring light pigtail is not fully connected. See photo on Page 5.

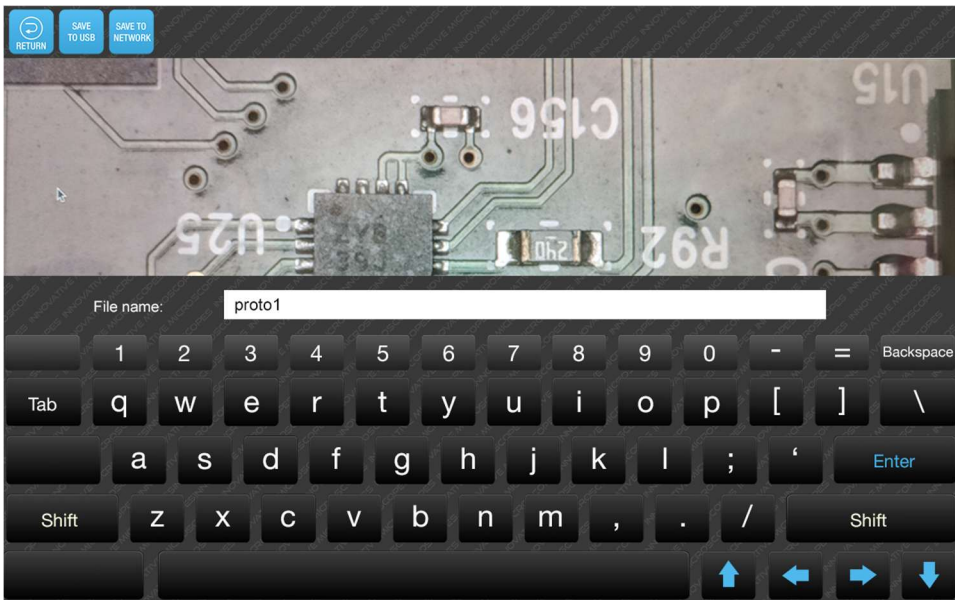


6. CAPTURING IMAGES

1. Make sure your DM-S7 is powered ON.
2. A USB thumb drive is inserted into USB port (see Pg. 5 for location).
3. Select Snapshot Icon.
4. Select Snapshot Icon on second screen to capture.
5. The screen will display the captured image along with annotation tools at top.
6. The image could now be save or be discarded.
7. If image is discarded, the screen will return to the snapshot screen



8. Provide a file name to save or select return to annotation editor.
9. Please use a USB thumb drive.



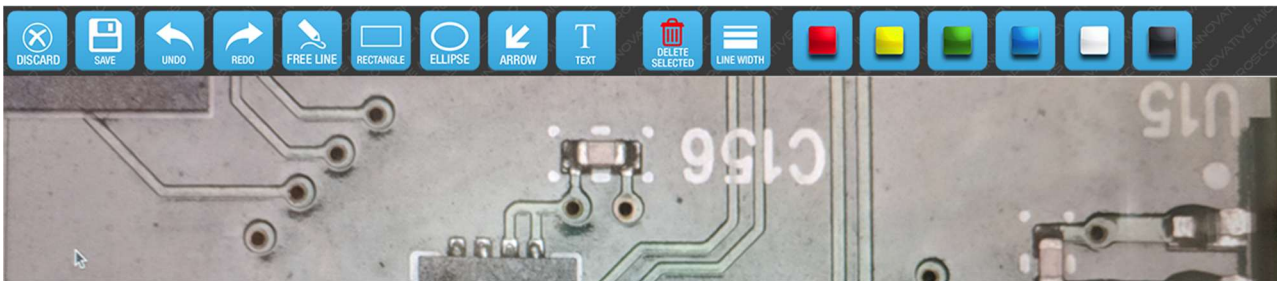
7. ANNOTATION EDITOR

The annotation editor is accessible by pressing the snapshot icon.

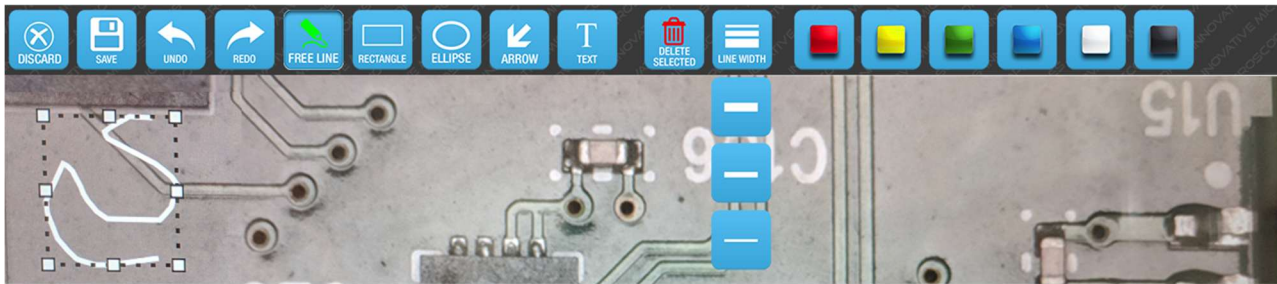


Icon Description

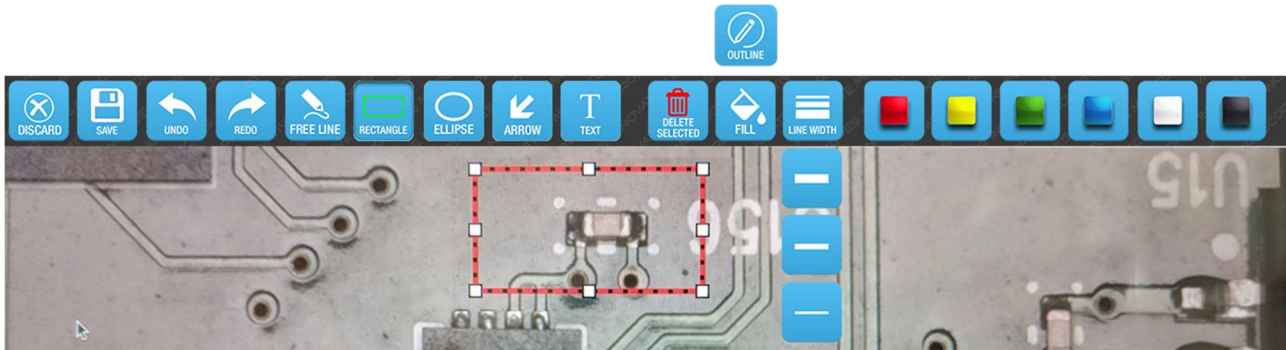
1. DISCARD: discard the captured image and return to the snapshot menu
2. SAVE: save captured image with a file name
3. UNDO: undo previous edit
4. REDO: redo last edit
5. FREE LINE: draw a free hand line segment
6. RECTANGLE: draw a scalable rectangle
7. ELLIPSE: draw a scalable ellipse
8. ARROW: draw an arrow
9. TEXT: text annotation
10. DELETE SELECTED: delete the selected annotation
11. LINE WIDTH: three selectable line widths for FREE LINE, RECTANGLE, ELLIPSE and ARROW annotation
12. COLOR: color palette for FREE LINE, RECTANGLE, ELLIPSE, ARROW and TEXT annotation



FREE LINE selected menu. There are options to select line weights and color.

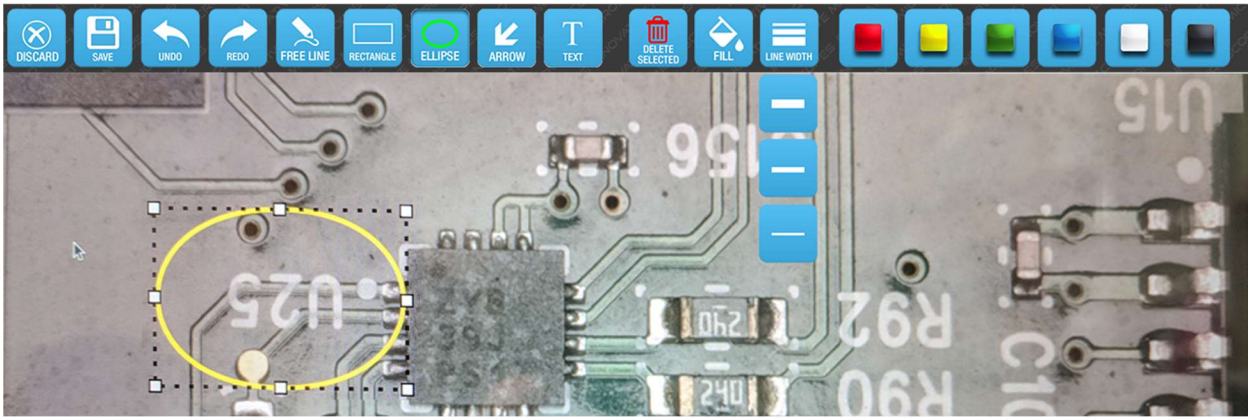


RECTANGLE selected menu. There are options to fill the rectangle and or select the desired line weights with preset color background. Alternately pressing the OUTLINE icon revert back to an outline rectangle.

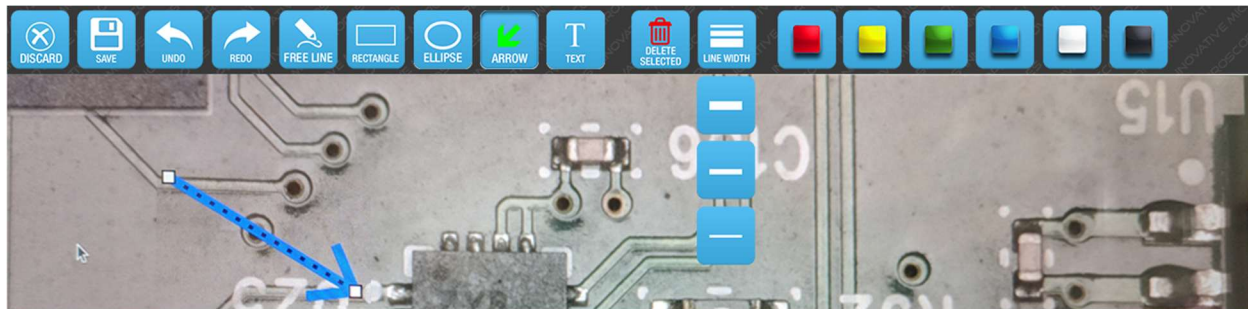


Annotation editor continue

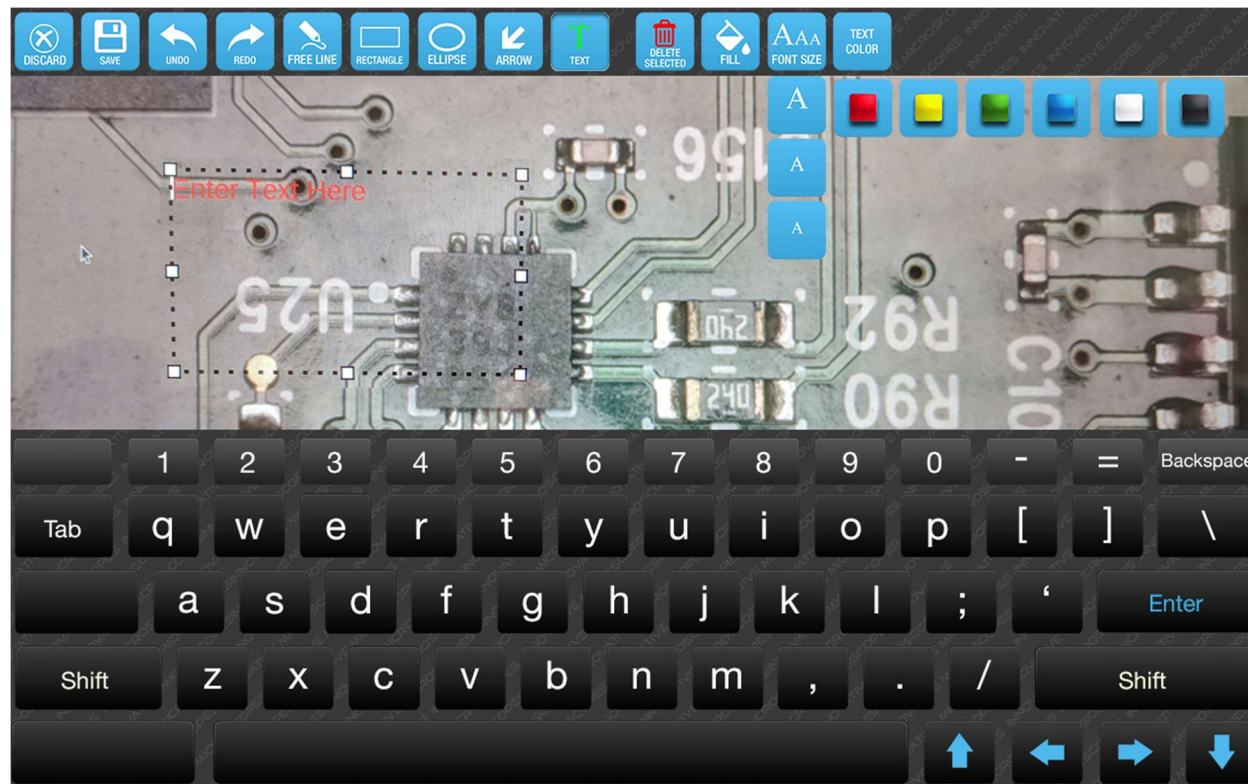
ELLIPSE selected menu. There are options to fill the ellipse and or select the desired line weights with preset color background.



ARROW selected menu. There are options to fill the arrow and or select the desired line weights with preset color background



TEXT ANNOTATION BOX menu. There are options to select the desired text size and color. The text box background fill is also available.



8. Zoom Lock Setting

This setting is used by Admin to lock out certain preset zoom levels.

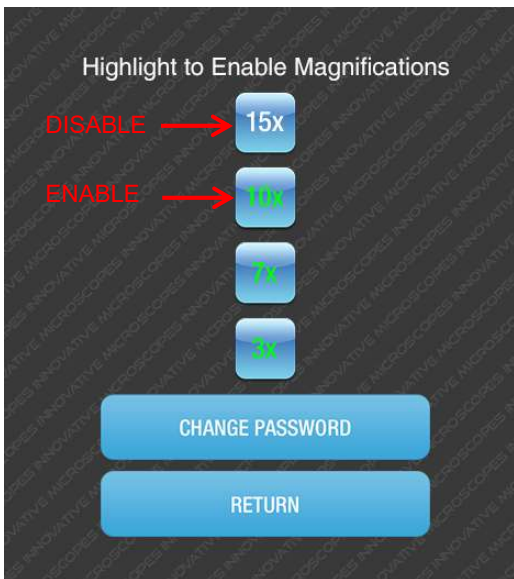
1. To lock out preset zoom levels press the Zoom Setting Icon at the top of the menu bar.
2. A Password Dialog will appear. (Default “**innoscopes**”).
3. Press the CONTINUE icon.



4. The ZOOM TOGGLE BOX allow user to enable/disable the preset zoom icon that will be available for use on the main screen.
5. Toggle the Zoom Icons to GREEN will enable and in WHITE to disable.
6. Press the RETURN button to proceed with the changes and return to the MAIN SCREEN.



7. The preset 15x zoom icon is no longer available on the main menu screen.



Changing the DM-S7 Admin Password

8. Admin password (Default “**innoscopes**”).
9. Click the CHANGE PASSWORD icon.
10. Enter the new password.
11. Click CONTINUE icon.

9. CARE AND MAINTENANCE

Your digital microscope is a precision optical instrument and should be treated with care at all times. Follow these care and suggestions and your microscope will need very little maintenance throughout its lifetime.

- + Store your microscope in a dry, clean place.
- + Never use your microscope where operation of such devices is restricted. Improper use creates the risk of serious accident.
- + do not try to access the internal components of your microscope or attempt to modify it in any way. Only authorized technicians should perform maintenance or repairs.
- + Keep your microscope away from water and other liquids. Never use it in the rain or snow. Moisture creates the danger of fire and electric shock.
- + To clean dust or smudges from the LCD screen or other optical component, first blow the dust off with air blower.
- + If the exterior surfaces of your microscope need cleaning, wipe with a moist cloth.

10. TROUBLESHOOTING

Problems	Solution
The unit does not turn on.	+ Wait 30-60 secs for the operating system to boot up
The screen is blank.	+ ensure that the power is on. + Wait 30-60 secs for the operating system to boot up + Verify that the object you want to magnify is positioned correctly under the lens. + check the monitor LED light is on + ensure the monitor power connector is secured to the microscope head unit (see pg. 3)
There are smudges or blemishes on the screen.	Clean the screen and lens carefully with a cloth.
USB error	Ensure a USB thumb drive has been inserted into the USB port

11. WARRANTY

Your DM-S7 Digital Microscope has a One year limited warranty. Please visit the Innovative Microscopes website for detailed information on all microscopes: WWW.INNOSCOPES.COM



©2016 Innovative Microscopes • All rights reserved. •
www.innosscopes.com
310 S. Twin Oaks Vly Rd., #107-382 • San Marcos,
CA 92078 U.S.A. Telephone: 1(760) 410-6166 •
Printed in USA 2016