



**INNOVATIVE
MICROSCOPES**

Providing High Quality & Economical Microscope Solutions

OPERATION MANUAL

SKU# DMS S7V2 15X/ 30X Model



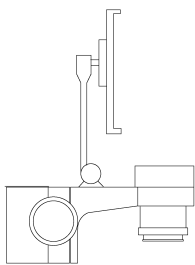
1. Introduction

Thank you for purchasing the DMS S7 V2 Digital Microscope. Your microscope is a precision optical instrument, made of the highest quality materials to ensure durability and long life.

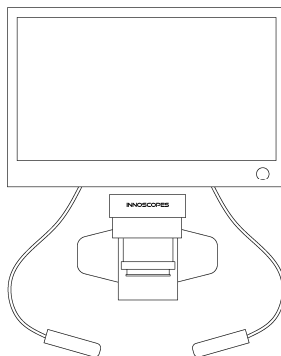
Before attempting to use your microscope, please read through the instructions and reference the diagrams below.

The DMS S7 V2 Digital microscope provides viewing from 7x to 15x or 10x to 30x depending on model using the built-in software and touchscreen display. The microscope is shipped with the latest firmware.

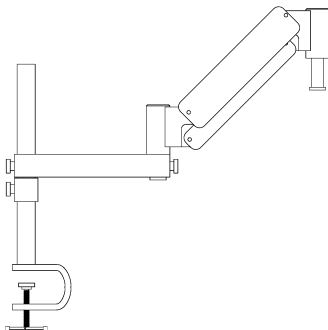
IN THE BOX



DMS S7 V2 Microscope (1)



Display (1)



Articulating Arm (1)

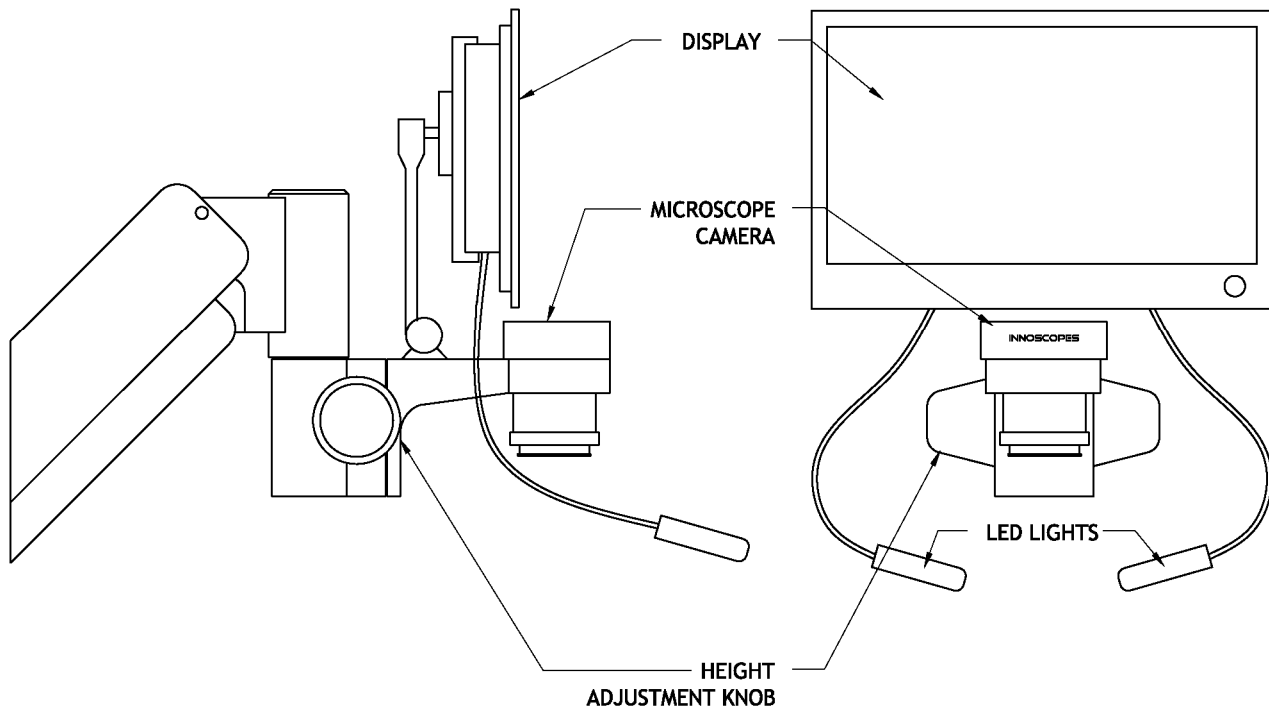


Calibration Slide (1)

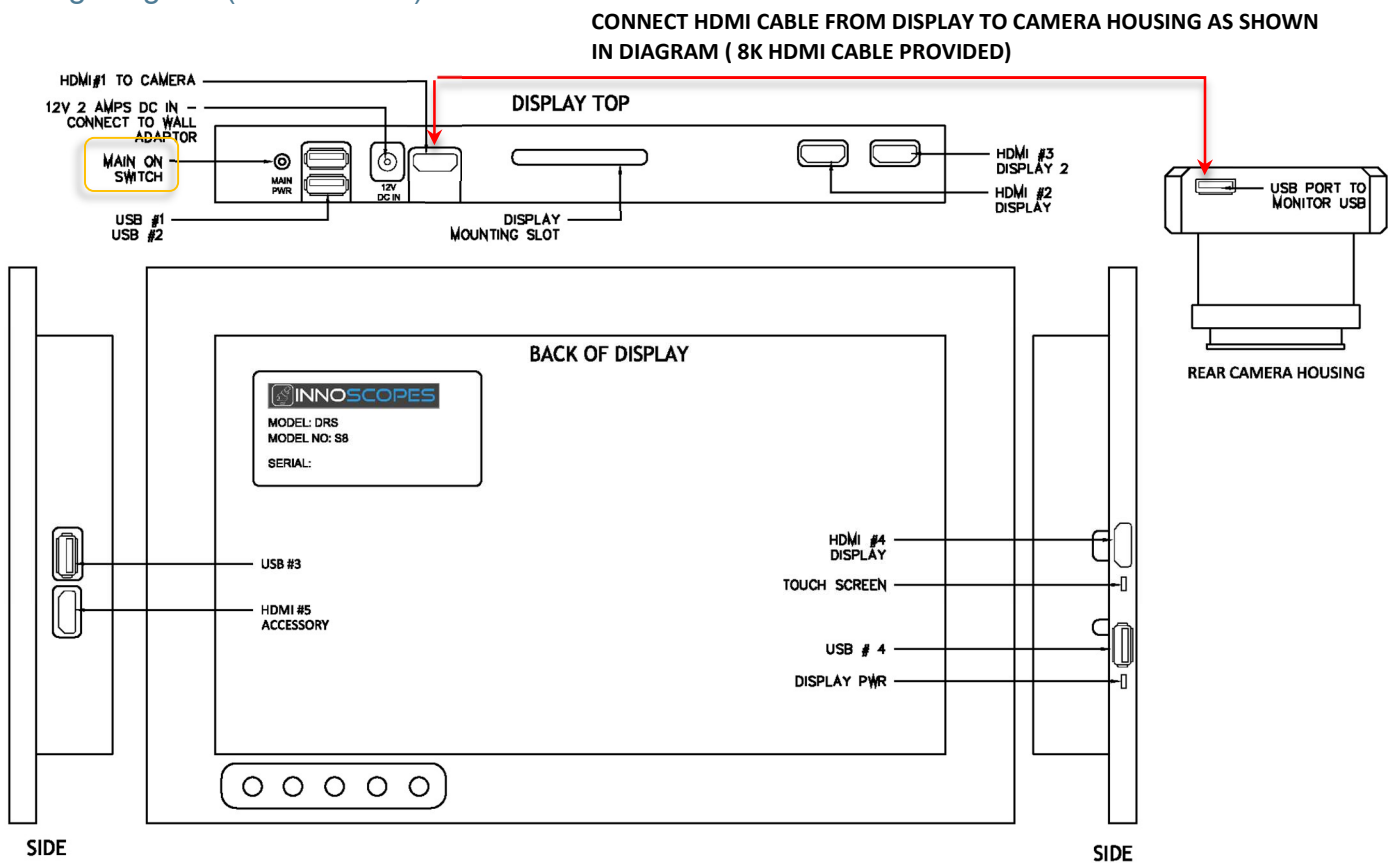


AC adapter (1)

2. PARTS



Wiring Diagram (Pre-installed)



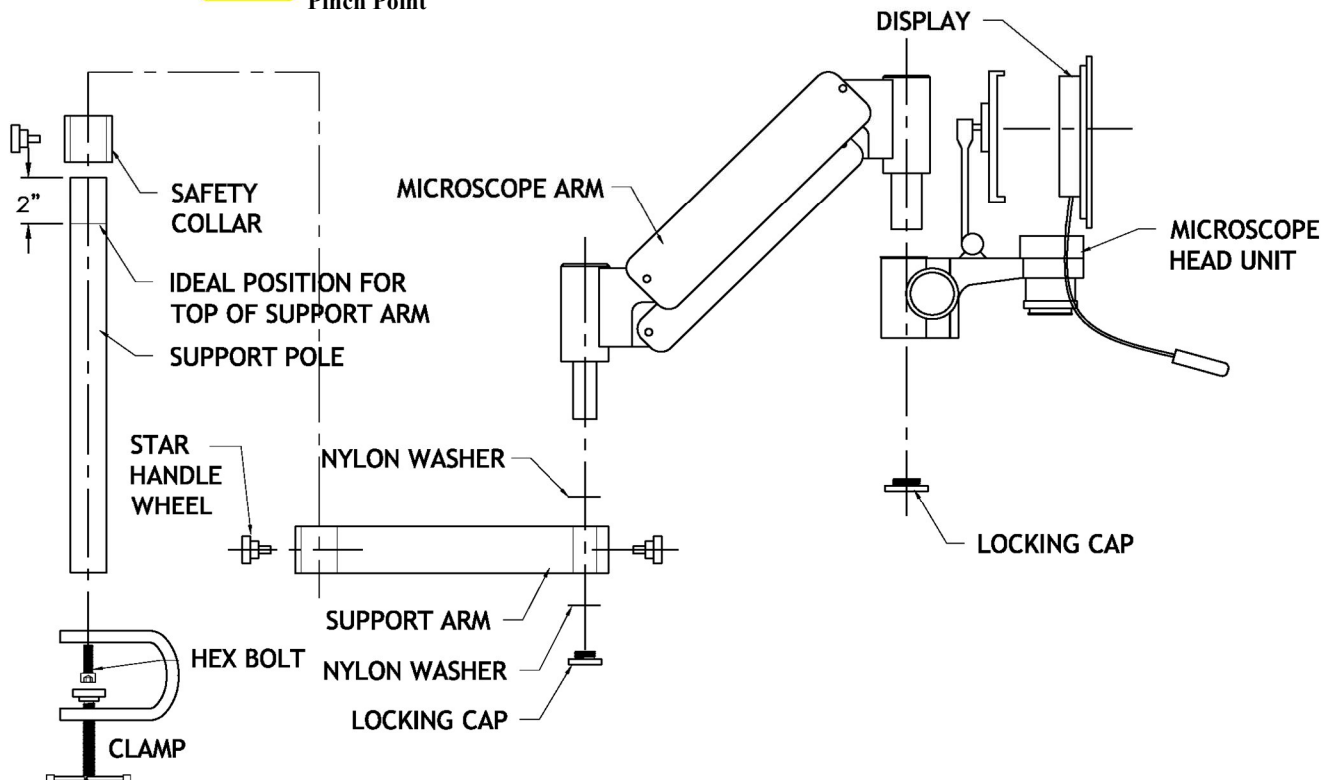
SPECIFICATIONS

Category	Specifications
SKU	DMS S7 V2
LCD Monitor	12.5" capacitive touchscreen, 1920 pixels, 1080P, 16:9 ratio 16.7 million colors, Brightness (cd/m2) 300+, Response time 5 ms
Zoom Presets 15x	7x, 10x, 12x, 15x
Zoom Presets 30x	10x, 15x, 20x, 25x, 30x
Illuminator	16 Inch gooseneck 5000k LED lamp, 8 LEDs per wand
Image Capture Resolution	1920 x 1080
Working Distance	6.5 Inch
AC adapter	US Plug 110V
Dimensions	356 x 224 x 9 mm (14" x 9" x 3/8")
Weight	4 lbs. or 1.82 kg
SAFETY	
	The socket-outlet shall be installed near the equipment accessible.
	Do not look directly into LED Dome Light while lights are on.
	Do not look directly into the Laser light
	Disconnect main power wall adapter when servicing the microscope.

3. SETUP



CAUTION
Pinch Point



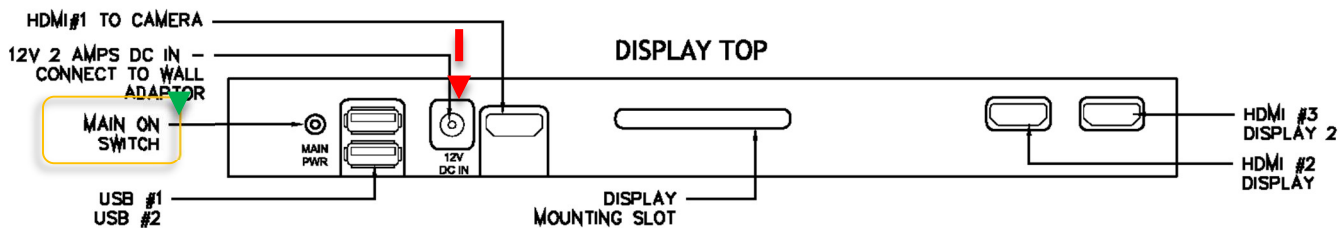
Power on

Connect AC adapter to wall outlet (see dashed arrow).

Connect the Video cable supply with the display mounting arm to Camera head unit and to the Video #1 on the top of the display unit.

Press the POWER button on the top of the Display unit.
Allow 60 secs for operating system to boot up.

Your microscope is ready to use after splash screen Closes.



Power off

To POWER down use the on-screen menu.

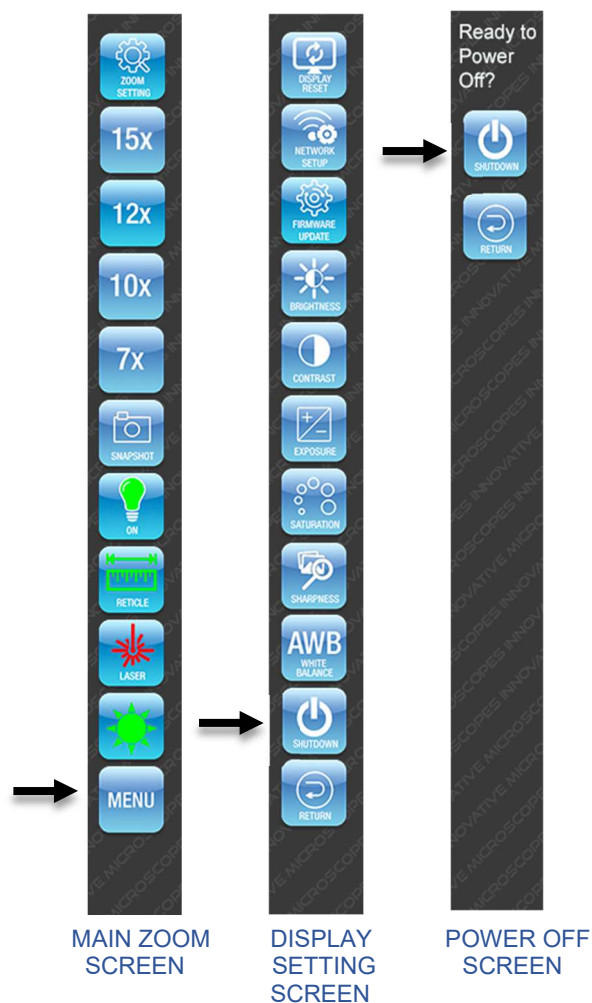
*Note: Recommend shutting off microscope at the end of each day.

Display Settings

Brightness, contrast, exposure, saturation and **sharpness** should be adjusted to desire settings based on object being viewed.



Display Reset – Resets all display settings to factory default



Focus Adjustment

1. SELECT the "lightbulb" icon to turn lights on 100%
2. SELECT 30x magnification
3. Adjust the articulating arm until object on screen comes into focus
4. Turn the height adjustment Knob up/down to fine focus object on screen



4. Using Reticle Function

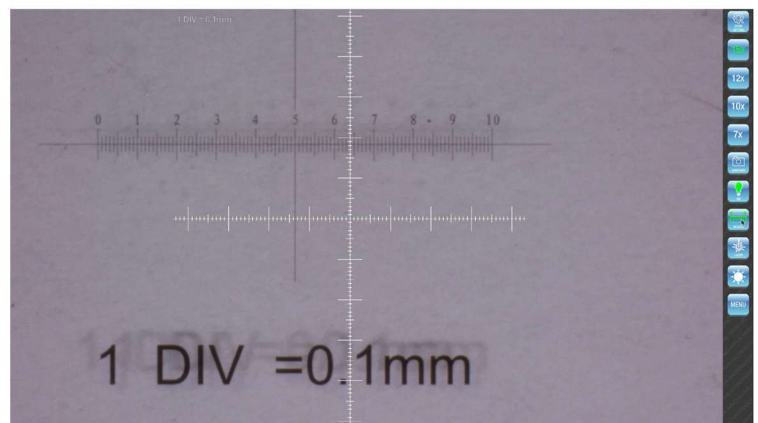
1. Calibration
2. Select the highest magnification
3. Use the provided calibration slide
4. Adjust the height adjustment knob to line up Reticle with calibration slide.
5. Once calibrated to the highest magnification, all magnifications are calibrated

*Notes:

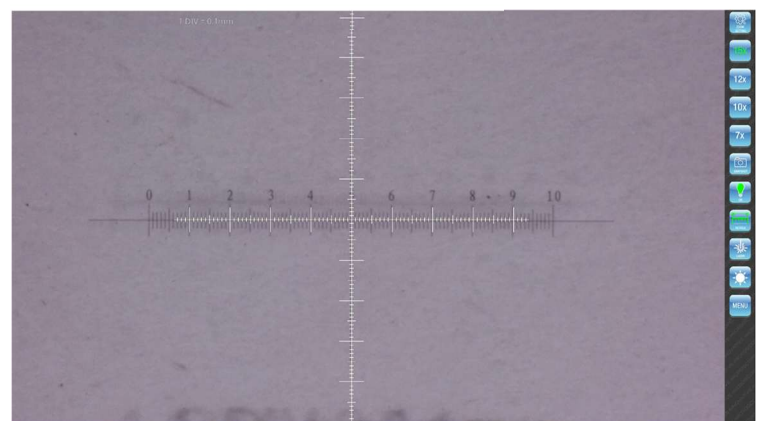
1. If the position of the camera has been moved, calibration must be performed again.



Calibration slide and reticle out of alignment



Calibration slide and reticle in alignment



5. ZOOM SELECTION

1. Zoom presets 7x, 10x, 12x and 15x for 15x model
2. Zoom presets 10x, 15x, 20x, 25x and 30x for 30x model
3. Select the desired zoom magnification
4. Active selection is marked by Green text.



6. LIGHT CONTROLS

1. SELECT the "light bulb" icon to toggle light control on and off.



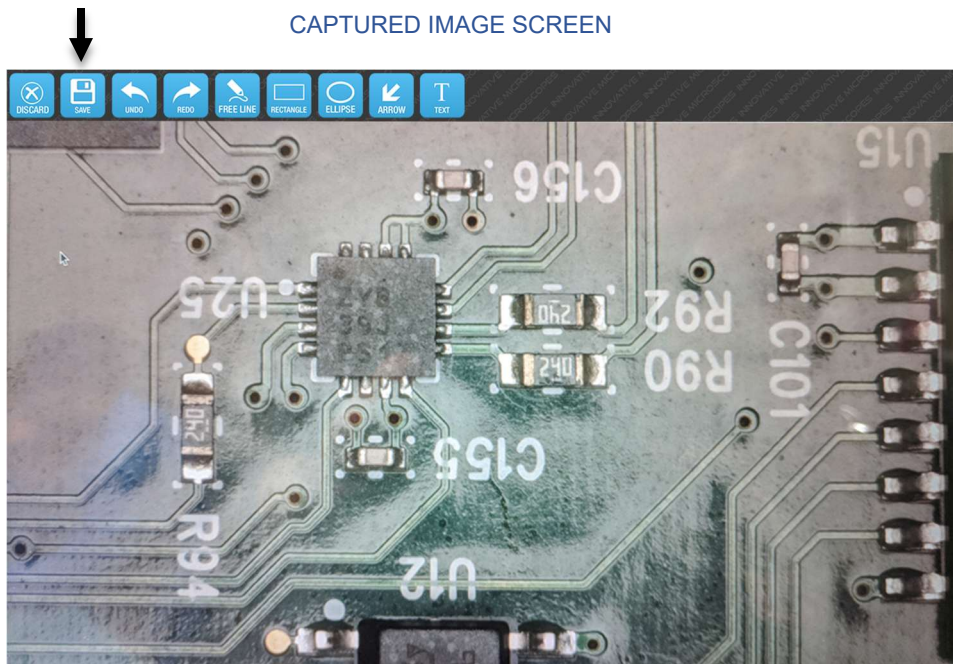
MAIN ZOOM
SCREEN

7. CAPTURING IMAGES

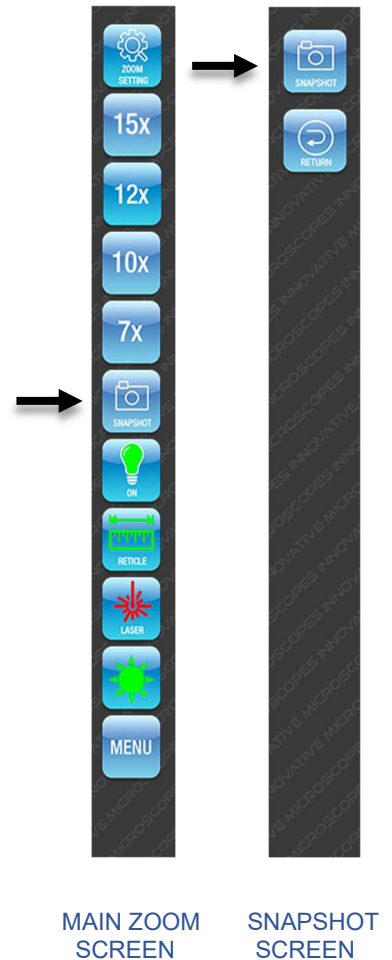
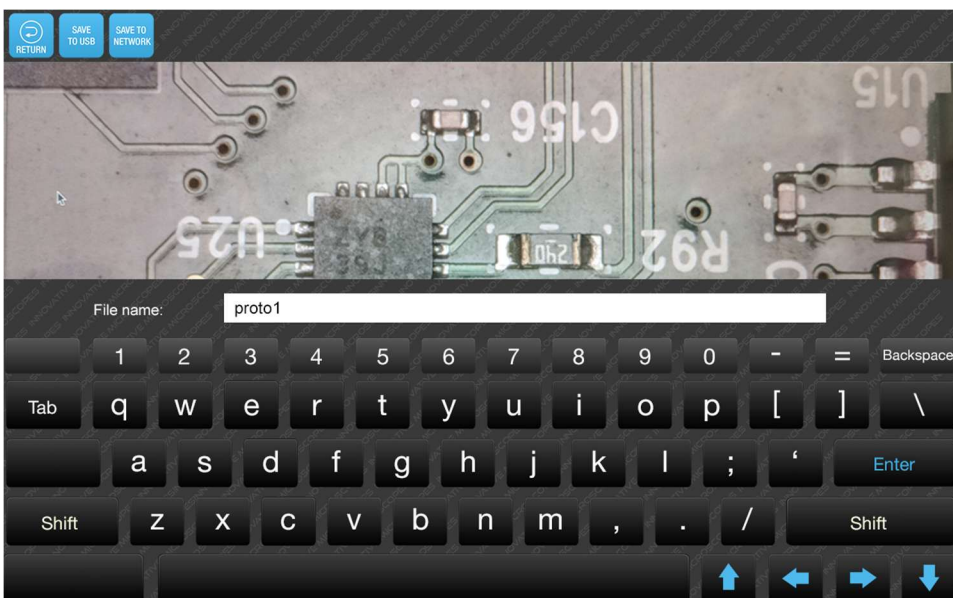
1. Make sure your DMS S7 V2 is powered ON.
2. A USB thumb drive is inserted into USB #1 (see Pg. 3 for location).
3. Select Snapshot Icon.
4. Select Snapshot Icon on second screen to capture.
5. The screen will display the captured image along with annotation tools at top.
6. The image could now be saved or discarded.
7. If the image is discarded, the screen will return to the snapshot screen

***Notes:**

1. If reticle is turned on during picture capture, reticle will be captured.



8. Provide a file name to save or select return to annotation editor.
9. There're two options to save; USB thumb drive or network folder.



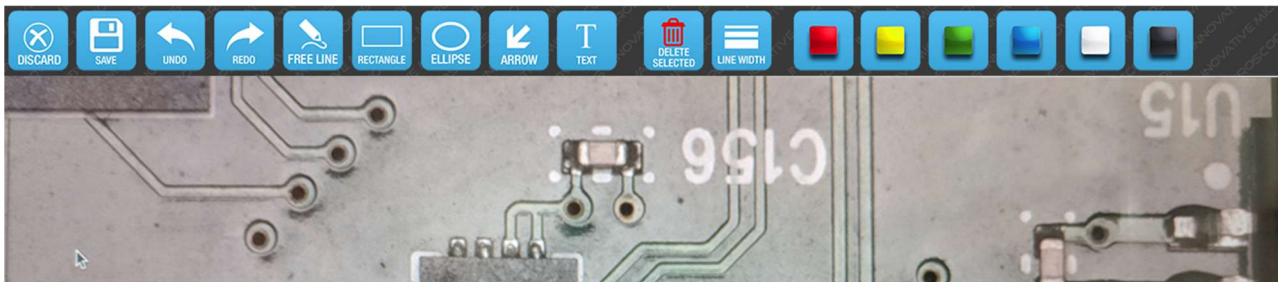
8. ANNOTATION EDITOR

The annotation editor is accessible by pressing the snapshot icon.

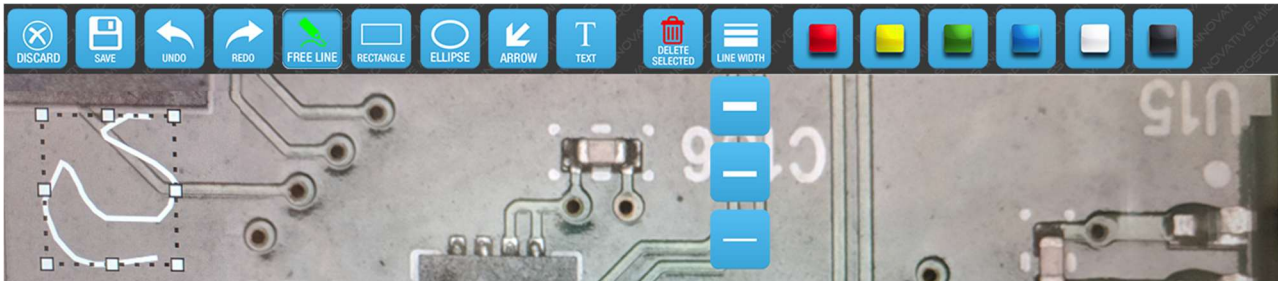


Icon Description

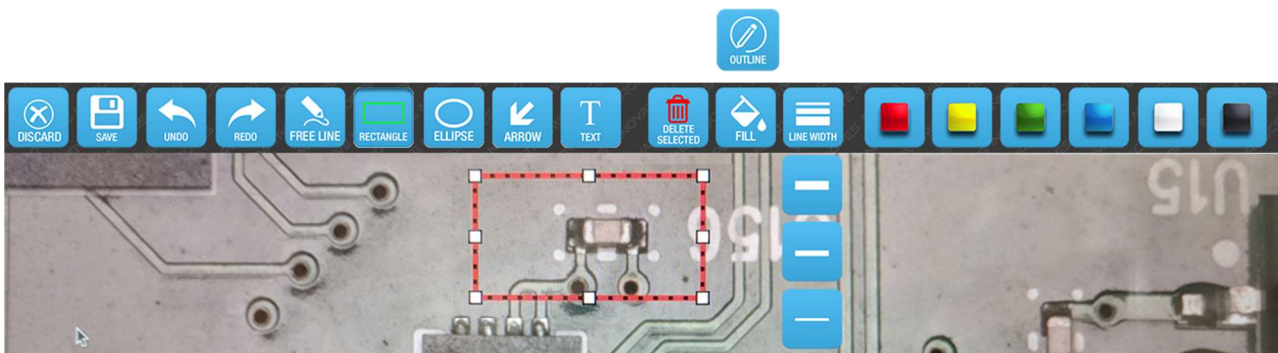
1. DISCARD: discard the captured image and return to the snapshot menu
2. SAVE: save captured image with a file name
3. UNDO: undo previous edit
4. REDO: redo last edit
5. FREE LINE: draw a free hand line segment
6. RECTANGLE: draw a scalable rectangle
7. ELLIPSE: draw a scalable ellipse
8. ARROW: draw an arrow
9. TEXT: text annotation
10. DELETE SELECTED: delete the selected annotation
11. LINE WIDTH: three selectable line widths for FREE LINE, RECTANGLE, ELLIPSE and ARROW annotation
12. COLOR: color palette for FREE LINE, RECTANGLE, ELLIPSE, ARROW and TEXT annotation



FREE LINE selected menu. There are options to select line weights and color.

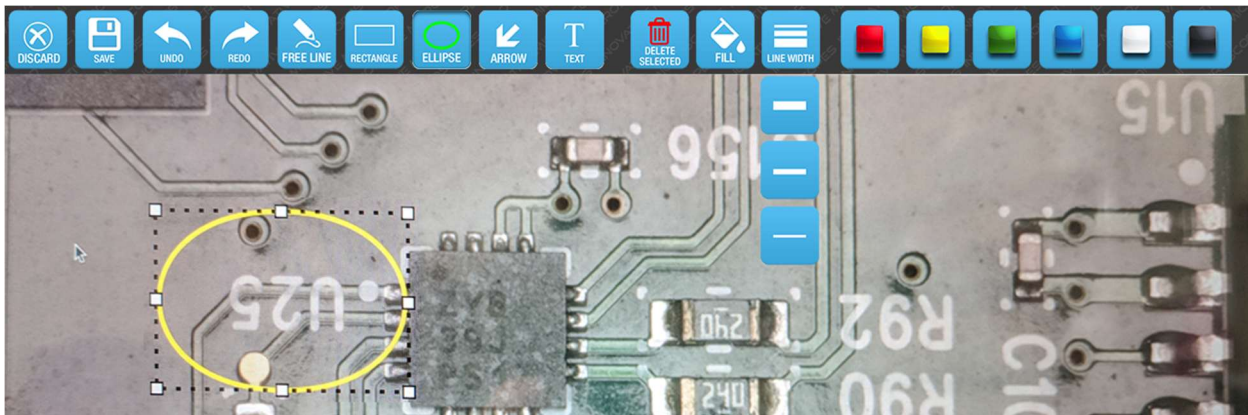


RECTANGLE selected menu. There are options to fill the rectangle and or select the desired line weights with preset color background. Alternately pressing the OUTLINE icon revert back to an outline rectangle.

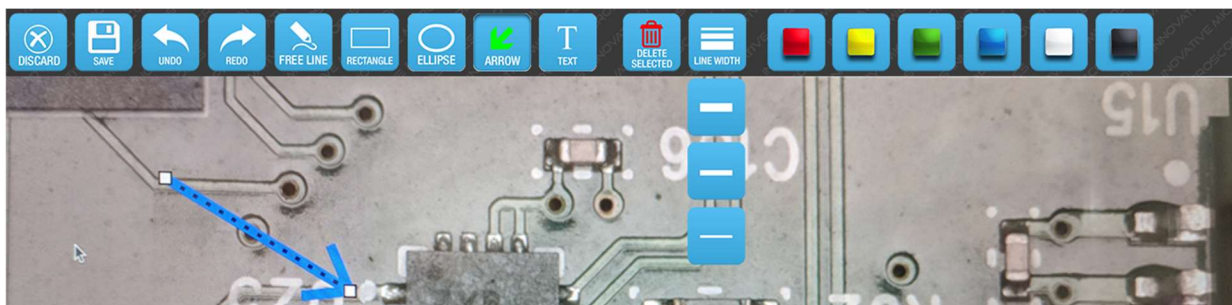


Annotation editor continue

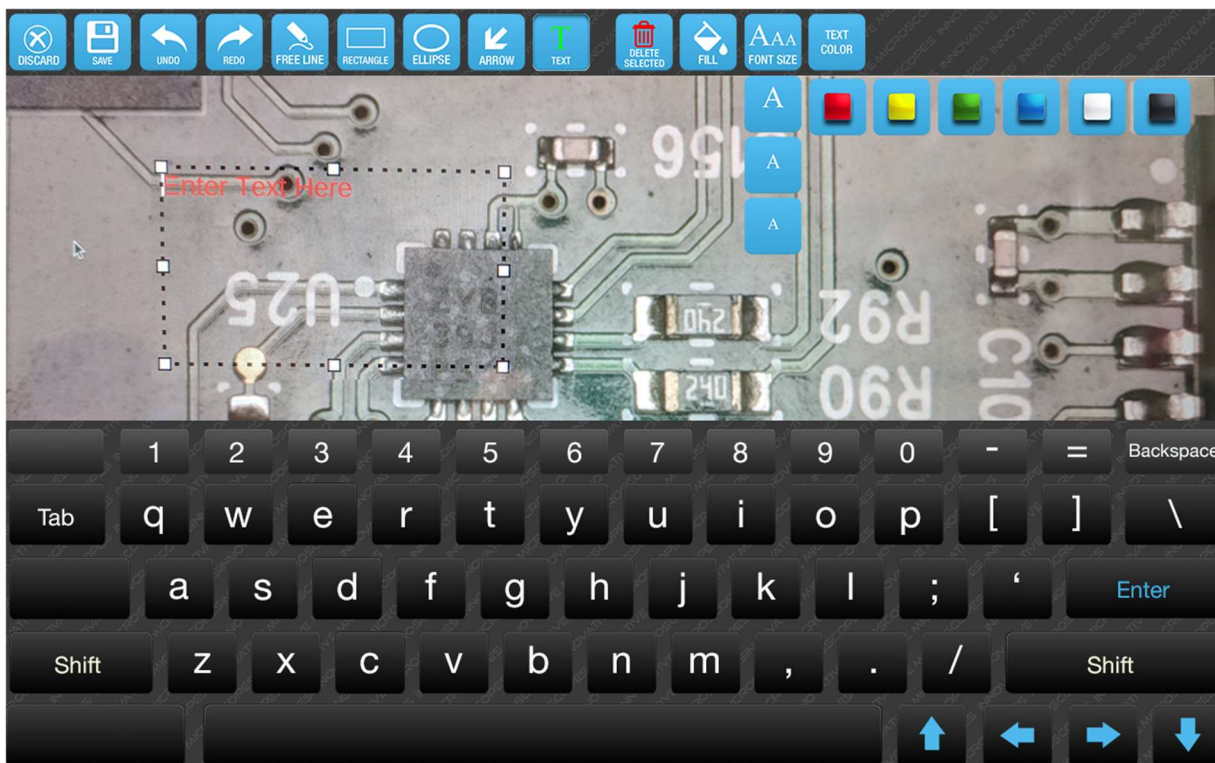
ELLIPSE selected menu. There are options to fill the ellipse and or select the desired line weights with preset color background.



ARROW selected menu. There are options to fill the arrow and or select the desired line weights with preset color background



TEXT ANNOTATION BOX menu. There are options to select the desired text size and color. The text box background fill is also available.



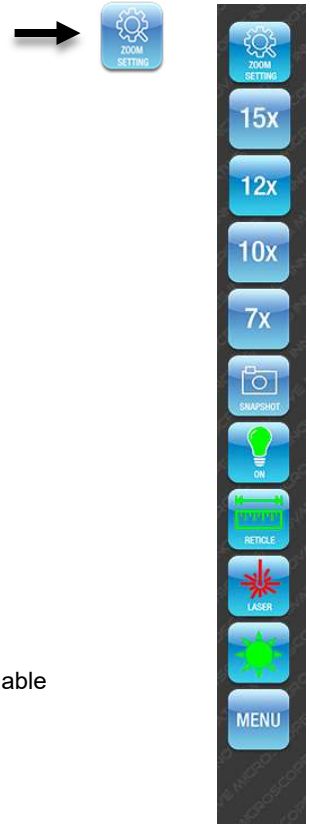
9.Zoom Lock Setting

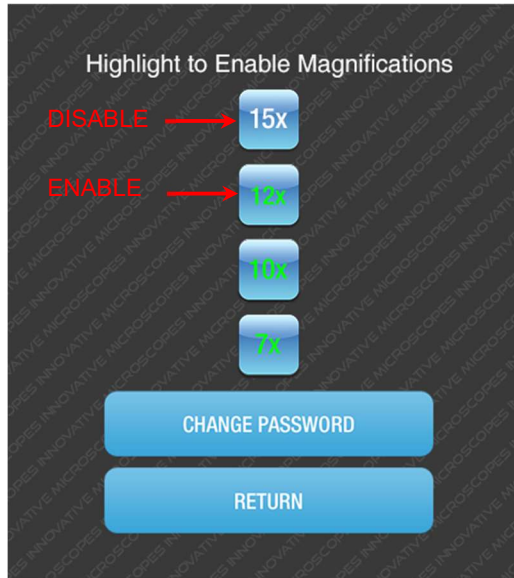
This setting is used by Admin to lock out certain preset zoom levels.

1. To lock out preset zoom levels press the Zoom Setting Icon at the top of the menu bar.
2. A Password Dialog will appear. (Default “**innoscopes**”).
3. Press the CONTINUE icon.



4. The ZOOM TOGGLE BOX allow user to enable/disable the preset zoom icon that will be available for use on the main screen.
5. Toggle the Zoom Icons to GREEN will enable and in WHITE to disable.
6. Press the RETURN button to proceed with the changes and return to the MAIN SCREEN.





7. The preset 15x zoom icon is no longer available on the main menu screen.

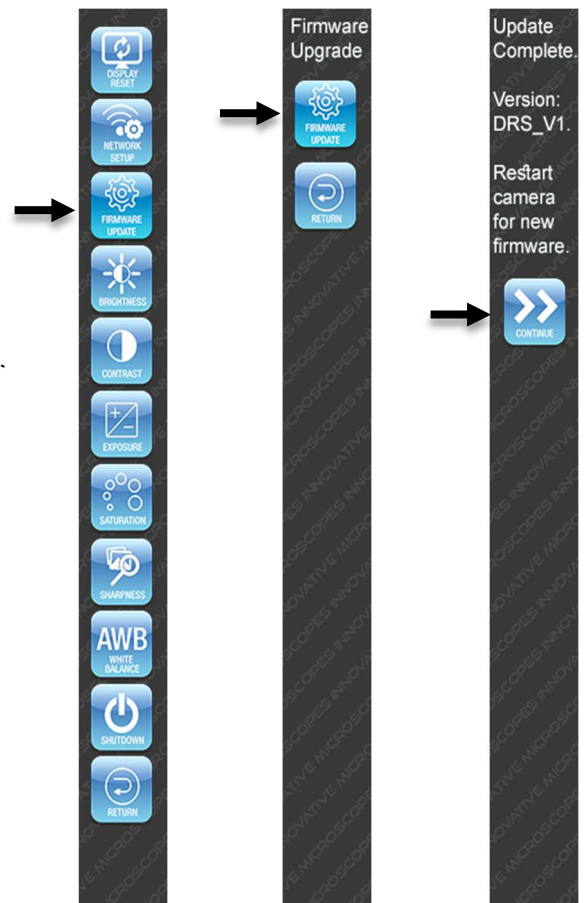


10. Firmware Update

Innovative Microscopes may provide firmware updates in the future to address functional issues or add new features to the microscope. Any announcement of updates or changes to the software will be made by our technical support department and directly contacting the customer.

Below is the process to update the software after technical support have provided the firmware update file.

1. Copy the firmware file on to the thumb drive.
2. Insert the thumb drive into USB #1 (see wiring diagram Pg3.)
3. SELECT Menu
4. SELECT "Firmware Update icon"
5. SELECT "Firmware Update icon" on the second screen again to initiate.
6. After the system completes the update. It will confirm the update completion and version date.
7. SELECT continue icon to reboot for the new firmware to take effect.



11. CARE AND MAINTENANCE

Your digital microscope is a precision optical instrument and should be treated with care at all times. Follow these care and suggestions and your microscope will need very little maintenance throughout its lifetime.

- + Store your microscope in a dry, clean place.
- + Never use your microscope where operation of such devices is restricted. Improper use creates the risk of serious accident.
- + do not try to access the internal components of your microscope or attempt to modify it in any way. Only authorized technicians should perform maintenance or repairs.
- + Keep your microscope away from water and other liquids. Never use it in the rain or snow. Moisture creates the danger of fire and electric shock.
- + To clean dust or smudges from the LCD screen or other optical component, first blow the dust off with air blower.
- + If the exterior surfaces of your microscope need cleaning, wipe with a moist cloth.

12. TROUBLESHOOTING

Problems	Solution
The unit does not turn on.	+ Wait 60 secs for the operating system to boot up
The screen is blank or unresponsive.	+ ensure that the power is on. + Wait 60 secs for the operating system to boot up + Verify that the object you want to magnify is positioned correctly under the lens. + check the monitor LED light is on + ensure the monitor power connector is secured to the microscope head unit (see pg. 3) + Unplug the power from wall outlet. Wait 5 secs and plug into the outlet. Press the power button
There are smudges or blemishes on the screen.	Clean the screen and lens carefully with a cloth.
USB error	Ensure a USB thumb drive has been inserted into the USB port

13. WARRANTY

Your DMS S7 V2 Digital Microscope has a One year limited warranty. Please visit the Innovative Microscopes website for detailed information on all microscopes: WWW.INNOSCOPES.COM



©2016 Innovative Microscopes • All rights reserved. • www.innosscopes.com
806 N. Twin Oaks Valley Rd., Suite 140
San Marcos, CA 92078 U.S.A.
Telephone: 1(760) 410-6166
Printed in USA 2016